



THE DIGITAL
SOLUTION...
TO MANAGING YOUR
MICROFILM - **THE ST200**



BRING YOUR MICROFILM
**OUT OF
THE DARK!**



The digital solution for microfilm viewing, printing & scanning.



Now with a microfiche & opaque card attachment...

PUT **DIGITAL MICROFILM** AT EVERY WORKSTATION WITH THE **ST200** DIGITAL MICROFILM SCANNER SYSTEM. **THE SIMPLE, COMPACT, DIGITAL SOLUTION** FOR VIEWING, PRINTING, AND SCANNING ROLL FILM...NOW WITH A **MOCA** ATTACHMENT.

MOCA installs directly onto the ST200...no additional space is needed! And, it's easy to operate since it uses the same ScanWrite® and ST Snapshot® scanning software already part of the ST200 system. **MOCA** captures great SVGA resolution (1024 x 768) images in just 8 seconds from any media...and reductions from 7X to 48X...all without changing lenses or removing the roll-film carrier!

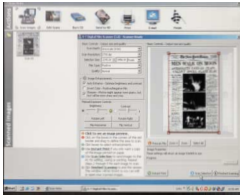
THE ST200

Digital Microfilm Viewer-Scanner



Top Quality Images...
So Easy to Use!

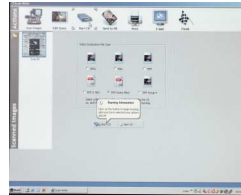
SCAN



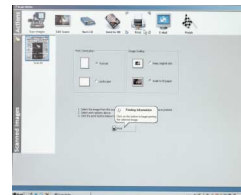
EDIT



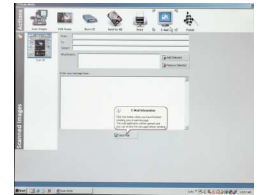
BURN CD



PRINT



E-MAIL



Featuring revolutionary ST Imaging scanner technology, the ST200 gives you incredible film scans at resolutions of up to 2700 dpi, while keeping file sizes small enough to handle. View, zoom, flip, crop, scan, burn to CD, print, send to email...whatever you have on microfilm, your patrons can view and capture using a PC.

ST200 Features...

- Exceptionally clear images for on-screen viewing and near archival scanning. No glass to touch film.
- Automatic focus, real-time video.
- Scan directly from 16mm & 35mm roll film, not from a projected image like other reader/printers.
- Crop images, view negative film in positive mode, rotate images 90/180/270/360 degrees.
- Zoom out to full page; zoom in to read small text with a single lens.
- Instant print – print whatever is on screen directly - no need to save or scan before printing.
- Scan up to a full newspaper page in one pass, no image stitching required.
- Includes ScanWrite®, Adobe Photoshop Elements™, and Nero Express® CD burning software.



SPECIFICATIONS:

ST100 / ST200 Digital Scanner

Scanning Type: 35mm Direct Film Scan
Image Sensor: Linear Array Color CCD
Color Mode: 36 bits per pixel
Grayscale Mode: 8 bits per pixel
Optical Resolution:
2700 x 2700 dpi – up to 9.6 million pixels
Maximum Resolution; Software enhanced
to 19,200 x 19,200 dpi
Light Source: Cold Cathode Florescent Lamp
Scan Buffer: 512 K byte
Preview Speed: 10 seconds
Scan Speeds: Snapshot - 8 seconds,
High resolution 45-75 seconds
Maximum Area: 35 mm x 36 mm single pass
Interface USB 1.1
Power Adapter: 12 VDC / 1A
Power Source: AC 100-240 V 50Hz - 60Hz
PC Recommendations:
512MB Ram, 17" or larger monitor,
2 USB 1.1 or 2.0 ports
Operating Systems: Microsoft Windows XP
Microsoft Windows 2000

ST200 Digital Film Viewer System

Screen Refresh: 20 frames per second
Image Resolution: 1024 x 768 Pixels
Power Source: AC 100-240V 50Hz/60Hz
Rated Current: 0.8A 0 0.4A
Input Selection: Main/Viewer 2 PC Systems
Output terminals:
RGB Output
Composite Video Output
S-video Output
Input Terminal: RGB Input
External Control: Mouse, Remote Control

ST200 Weight and Dimensions:

ST200 Digital Film Viewer
16" x 21" x 14" 18 lbs.
ST 200 Scanner Assembly
23" x 14" x 5" 9 lbs
ST200 Assembled System
23" x 20" x 14" 27 lbs



S-T IMAGING, INC.

a division of Digital Check Corp.

466 Central Ave., Suite 31 • Northfield, IL 60093 USA
Tel: 847 / 501-3344 • Fax: 847 / 501-3377
www.stimaging.com • email: info@stimaging.com

Authorized Reseller